

EDGING FLOOR GRINDER

GBS 3000 MANUAL



Global Business
SOLUTION

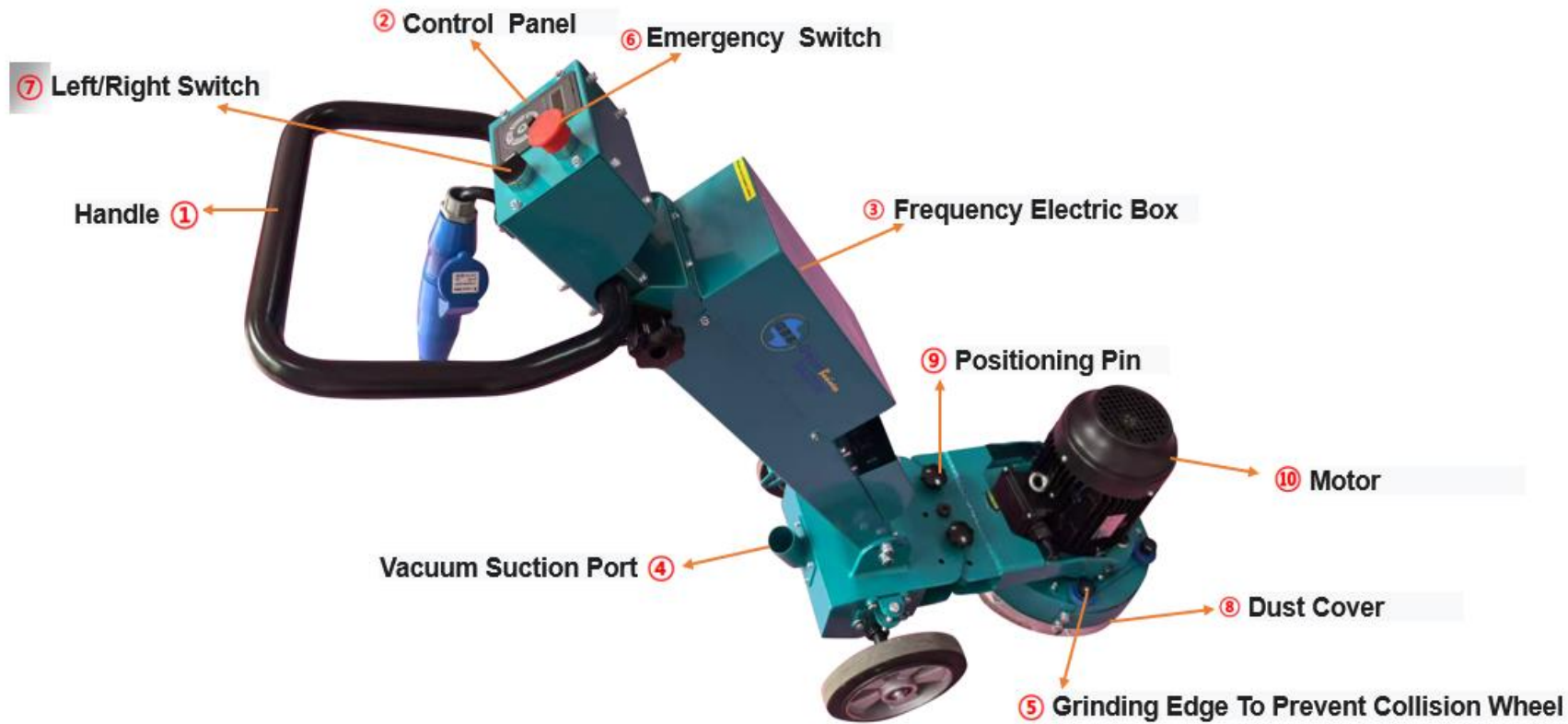
Setting up & Safety Instructions

Before use, the user must be trained in handling the machine

- 1) Place the grinder in the work area.
- 2) Check whether the dust cover is tight.
- 3) Check electrical specifications - 220V single phase, 50Hz. The power cord must be the national standard four square meters, Three cores, check the insulation condition.
- 4) Confirm buttons and other parts have not loosened as a result of transportation
- 5) Always wear personal safety equipment e.g. Ear protection, dust mask, Waterproof shoes and approved eye protection.
- 6) The machine should not be used in areas where fire or explosion may occur.
- 7) Make sure the power cord is not caught in a door, fence or similar.
- 8) After the wiring is completed, recheck to ensure that everything is ok.

NOTICE :

- * Please pay attention to safety instructions.
- * Please read this instruction manual carefully before using the Edging grinder



Length * width * height	1300X530X1070mm
Weight	100KG
Power	2.2KW
Grinding width	300mm
Power Supply	220V*4mm ²
Inverter power	4kw

- **Take the following safety measures when mounting grinding disks.**
- **Remove any weight.**
- **Disconnect the power supply and the power cable.**
- **The machine up, and remove the old grinding disks using the special tool. The tools can be also be bolted to the machine if required.**
- **Caution : The disks may be hot after operating the machine.**
- **See pictures as following.**
- **The direction of disc rotation counterclockwise. Therefore, bolting direction to fasten the disc to center shaft should be clock wise.**

Mounting of Grinding Disks

Diamond cup Wheel

1



2



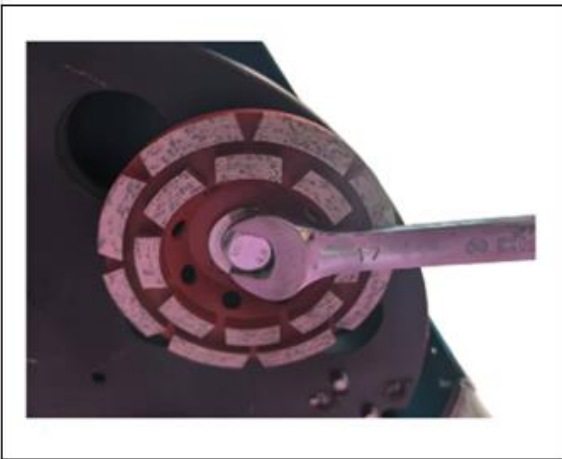
3



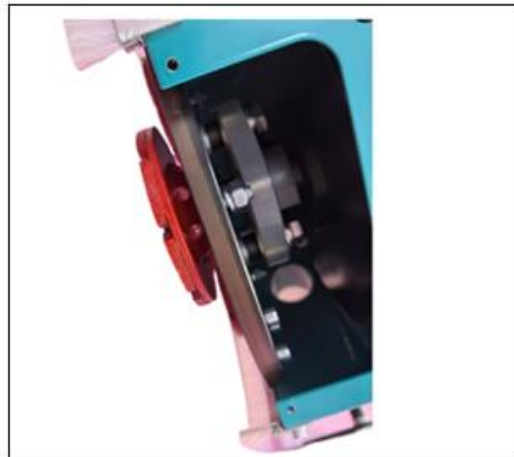
4



5



6

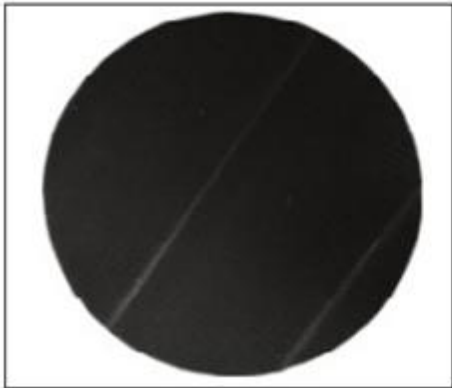


7

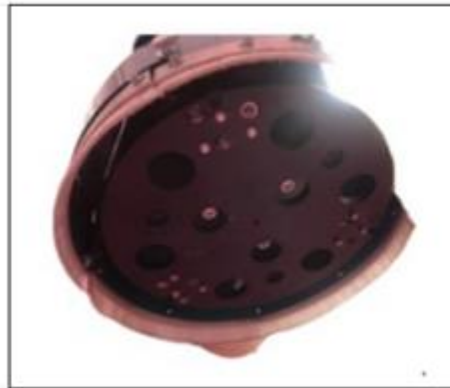


Resin Polishing Pads

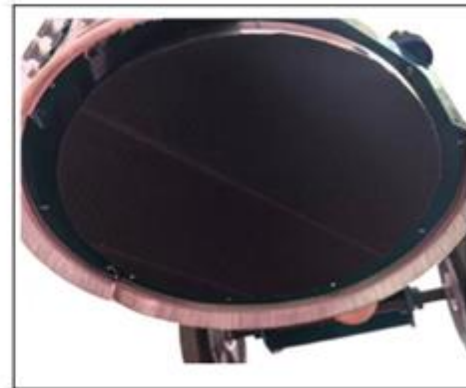
1



2



3



4





15° to Right



Vertical



15° to Left

1. This edging machine has a grinding and polishing system for metal and resin pads for the most accurate edge grinding and polishing results.
 2. Not only does it deal with edges and angles; Suitable for small area construction, single-head floor grinding machine, Just like a garage.
- Edge grinding:
3. For edge precision, the dust cover rotates 15° angle and the grinding and cutting of the wall leaves 0 mm. Linear work is possible
 4. SMALL AREAS: Adjust machines head vertically or horizontally for small construction projects
 5. Use a conversion-pad to attach pads to grinding plates with polishing conversion pad, you could install polishing pad onto grinding plate for polishing treatment

Compatible Tools



Velcro backed
Adapters



Edgemet
Trapezoids

Troubleshooting

Trouble No.	Problem	Description	Solution
1	Start/stop malfunction	<ol style="list-style-type: none"> 1. Wrong/improper power cable connection 2. Wrong /improper voltage output 3. Broken direction switch 4. Broken speed -control switch 5. Broken emergency -stop switch 6. Broken inverter 7. Broken motor 	<ol style="list-style-type: none"> 1. Verify power cable is properly installed 2. verify machine voltage matches power supply 3. Repair/Replace broken direction switch 4. Repair/Replace broken speed -control switch 5. Repair/Replace broken emergency -stop switch 6. Repair/Replace broken inverter 7. Repair/Replace broken motor
2	Frequency adjustment malfunction	<ol style="list-style-type: none"> 1. Inverter parameters setup error 2. Broken speed-control meter 3. Control power cables short /open circuit 	<ol style="list-style-type: none"> 1. Reset inverter parameters 2. .Repair/replace speed-control meter 3. Repair/replace control power cable
3.	Diamond tool falls off	<ol style="list-style-type: none"> 1. Diamond tools do not fit 2. .Magnetic tools do not fit 3. Old Velcro adapters/tools 4. .Uneven/unleveled concrete surface 	<ol style="list-style-type: none"> 1. Verify/replace diamond tools 2. Verify/replace magnetic tools 5. Verify/replace Velcro adapters/tools 3. Reduce rotation speed
4.	Motor over-heating	<ol style="list-style-type: none"> 1. Input voltage unstable 2. Improperly installed power cable 3. Loose wires 	<ol style="list-style-type: none"> 1. Adjust/stabilize power supply 2. Verify/replace for correct power cable 3. Verify/tighten wire terminals properly

MACHINE OPERATION

OPERATION

The following section describes how to operate and use the grinding machine. The section does not deal with the technical aspects of grinding such as choice of grinding tool etc.

NOTE :

Only personnel with the requisite training may operate the machine. It is assumed that the relevant personnel have read the safety regulations.

And that the machine is positioned on the surface intended for grinding, that the surface is not inclined and that the grinding disks are mounted.



▣ TIP : Right position to start.

** If you start on concrete surface may be damaged for the motor due to the load.

MEASURES PERIOD TO START :

1. Inspect the floor carefully and remove any protruding items such as reinforcement bars and bolts, as well as any loose material that could get caught in the machine.
2. Set the handle bar in the desired working position.
3. Fit the appropriate tools to the machine.
4. Mount and check the splashguard.
5. Connect the voltage to the terminal on the side of the frequency converter.
6. If the floor is dry ground, a dust extractor should be connected and started before starting the machine.

START OF MACHINE :

1. Push the on button. **MAINTENANCE** Always clean the machine after use. Do not use a pressure washer as this can force water into various components causing damage. We recommend the regular inspected once three month and change if worn. **MAINTENANCE** Always clean the machine after use.